

CROSSPOINT CORNER 4 9840 WESTPOINT DRIVE

INDIANAPOLIS, IN



PROPERTY HIGHLIGHTS

- Asking rate: \$21.95/sf
- Excellent for professional, medical, sales, and service tenants
- Prominently located in the I-69/Fishers/Geist corridor
- Crosspoint Corner places its tenants just minutes from everything on Indy's northeast side

DARRIN BOYD, SIOR, CCIM

Managing Director
+1 317 590 8490
darrin.boyd@cushwake.com

MATT BOYD

Senior Associate
+1 317 985 2693
matt.boyd@cushwake.com

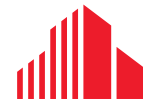
One American Square, Suite 1800
Indianapolis, IN 46282
+1 317 634 6363

cushmanwakefield.com

©2026 Cushman & Wakefield. All rights reserved. The information contained in this communication is strictly confidential. This information has been obtained from sources believed to be reliable but has not been verified. NO WARRANTY OR REPRESENTATION, EXPRESS OR IMPLIED, IS MADE AS TO THE CONDITION OF THE PROPERTY (OR PROPERTIES) REFERENCED HEREIN OR AS TO THE ACCURACY OR COMPLETENESS OF THE INFORMATION CONTAINED HEREIN, AND SAME IS SUBMITTED SUBJECT TO ERRORS, OMISSIONS, CHANGE OF PRICE, RENTAL OR OTHER CONDITIONS, WITHDRAWAL WITHOUT NOTICE, AND TO ANY SPECIAL LISTING CONDITIONS IMPOSED BY THE PROPERTY OWNER(S). ANY PROJECTIONS, OPINIONS OR ESTIMATES ARE SUBJECT TO UNCERTAINTY AND DO NOT SIGNIFY CURRENT OR FUTURE PROPERTY PERFORMANCE.

9840 WESTPOINT DRIVE

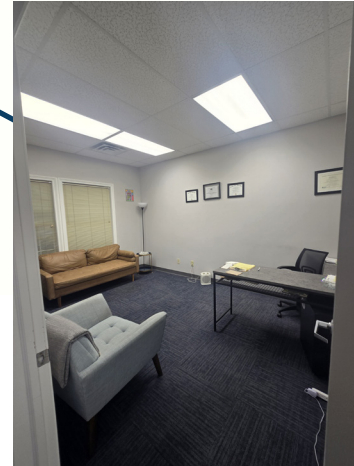
INDIANAPOLIS, IN



CUSHMAN &
WAKEFIELD



SUITE 400
AVAILABLE
2,291 SF



[CLICK HERE FOR A VIRTUAL TOUR](#)

DARRIN BOYD, SIOR, CCIM
Managing Director
+1 317 590 8490
darrin.boyd@cushwake.com

MATT BOYD
Senior Associate
+1 317 985 2693
matt.boyd@cushwake.com

One American Square, Suite 1800
Indianapolis, IN 46282
+1 317 634 6363

cushmanwakefield.com

©2026 Cushman & Wakefield. All rights reserved. The information contained in this communication is strictly confidential. This information has been obtained from sources believed to be reliable but has not been verified. NO WARRANTY OR REPRESENTATION, EXPRESS OR IMPLIED, IS MADE AS TO THE CONDITION OF THE PROPERTY (OR PROPERTIES) REFERENCED HEREIN OR AS TO THE ACCURACY OR COMPLETENESS OF THE INFORMATION CONTAINED HEREIN, AND SAME IS SUBMITTED SUBJECT TO ERRORS, OMISSIONS, CHANGE OF PRICE, RENTAL OR OTHER CONDITIONS, WITHDRAWAL WITHOUT NOTICE, AND TO ANY SPECIAL LISTING CONDITIONS IMPOSED BY THE PROPERTY OWNER(S). ANY PROJECTIONS, OPINIONS OR ESTIMATES ARE SUBJECT TO UNCERTAINTY AND DO NOT SIGNIFY CURRENT OR FUTURE PROPERTY PERFORMANCE.

9840 WESTPOINT DRIVE

INDIANAPOLIS, IN



DARRIN BOYD, SIOR, CCIM
Managing Director
+1 317 590 8490
darrin.boyd@cushwake.com

MATT BOYD
Senior Associate
+1 317 985 2693
matt.boyd@cushwake.com

One American Square, Suite 1800
Indianapolis, IN 46282
+1 317 634 6363

cushmanwakefield.com

©2026 Cushman & Wakefield. All rights reserved. The information contained in this communication is strictly confidential. This information has been obtained from sources believed to be reliable but has not been verified. NO WARRANTY OR REPRESENTATION, EXPRESS OR IMPLIED, IS MADE AS TO THE CONDITION OF THE PROPERTY (OR PROPERTIES) REFERENCED HEREIN OR AS TO THE ACCURACY OR COMPLETENESS OF THE INFORMATION CONTAINED HEREIN, AND SAME IS SUBMITTED SUBJECT TO ERRORS, OMISSIONS, CHANGE OF PRICE, RENTAL OR OTHER CONDITIONS, WITHDRAWAL WITHOUT NOTICE, AND TO ANY SPECIAL LISTING CONDITIONS IMPOSED BY THE PROPERTY OWNER(S). ANY PROJECTIONS, OPINIONS OR ESTIMATES ARE SUBJECT TO UNCERTAINTY AND DO NOT SIGNIFY CURRENT OR FUTURE PROPERTY PERFORMANCE.

9840 WESTPOINT DRIVE

INDIANAPOLIS, IN



Built, Owned & Managed by:



DARRIN BOYD, SIOR, CCIM
 Managing Director
 +1 317 590 8490
 darrin.boyd@cushwake.com

MATT BOYD
 Senior Associate
 +1 317 985 2693
 matt.boyd@cushwake.com

One American Square, Suite 1800
 Indianapolis, IN 46282
 +1 317 634 6363

cushmanwakefield.com

©2026 Cushman & Wakefield. All rights reserved. The information contained in this communication is strictly confidential. This information has been obtained from sources believed to be reliable but has not been verified. NO WARRANTY OR REPRESENTATION, EXPRESS OR IMPLIED, IS MADE AS TO THE CONDITION OF THE PROPERTY (OR PROPERTIES) REFERENCED HEREIN OR AS TO THE ACCURACY OR COMPLETENESS OF THE INFORMATION CONTAINED HEREIN, AND SAME IS SUBMITTED SUBJECT TO ERRORS, OMISSIONS, CHANGE OF PRICE, RENTAL OR OTHER CONDITIONS, WITHDRAWAL WITHOUT NOTICE, AND TO ANY SPECIAL LISTING CONDITIONS IMPOSED BY THE PROPERTY OWNER(S). ANY PROJECTIONS, OPINIONS OR ESTIMATES ARE SUBJECT TO UNCERTAINTY AND DO NOT SIGNIFY CURRENT OR FUTURE PROPERTY PERFORMANCE.